



Navy Design & Construction Programs

Moderator:

- Rear Adm. Mark Handley, P.E., USN (Ret.),
AECOM

Speaker:

- Joseph Gott, P.E., SES, Chief Engineer, and
Director of Capital Improvements, HQ
NAVFAC



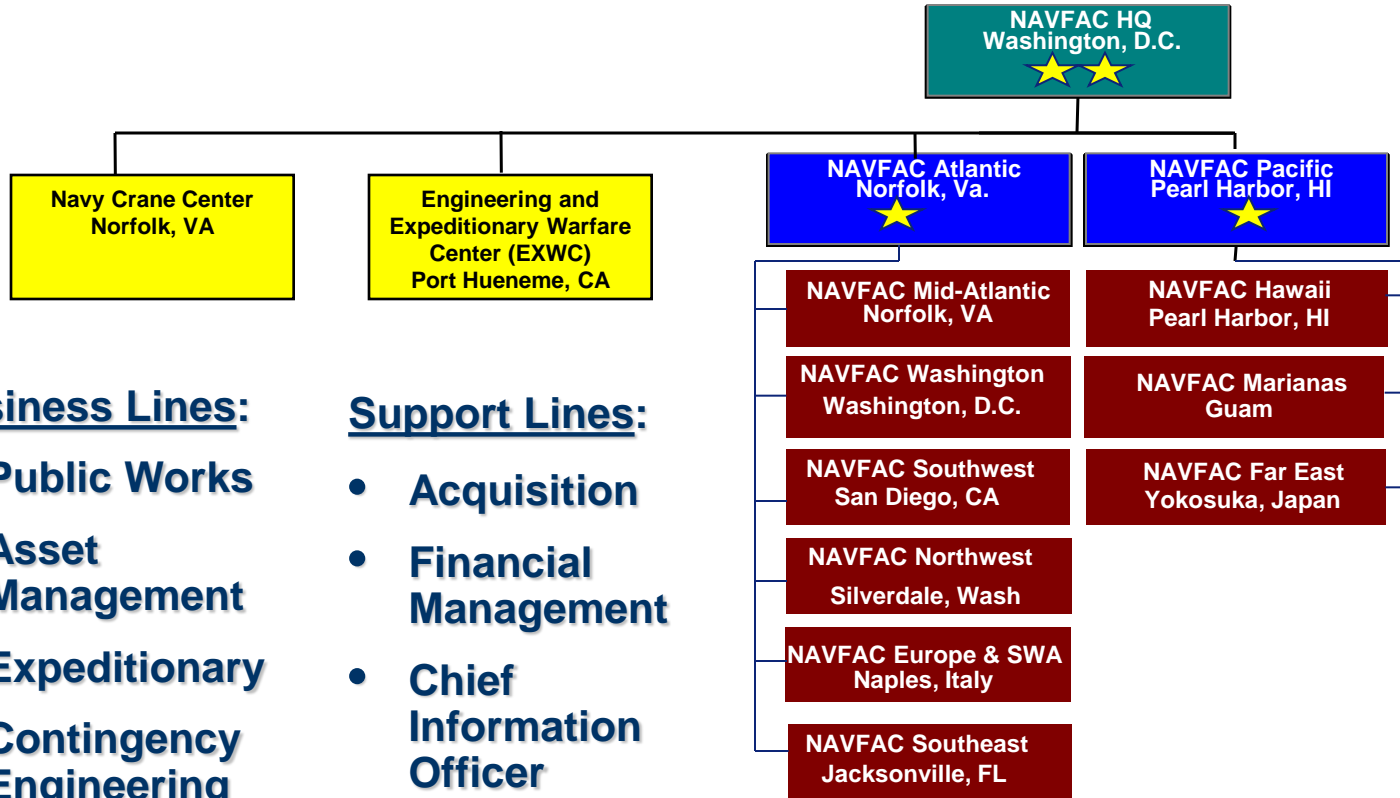
SAME

FY2017 DOD & Federal Program Briefings

**NAVFAC Design and Construction
Programs**

9 March 2016

**Joseph E. Gott, P.E.
Chief Engineer, and
Director, Capital Improvements
Naval Facilities Engineering Command**



Business Lines:

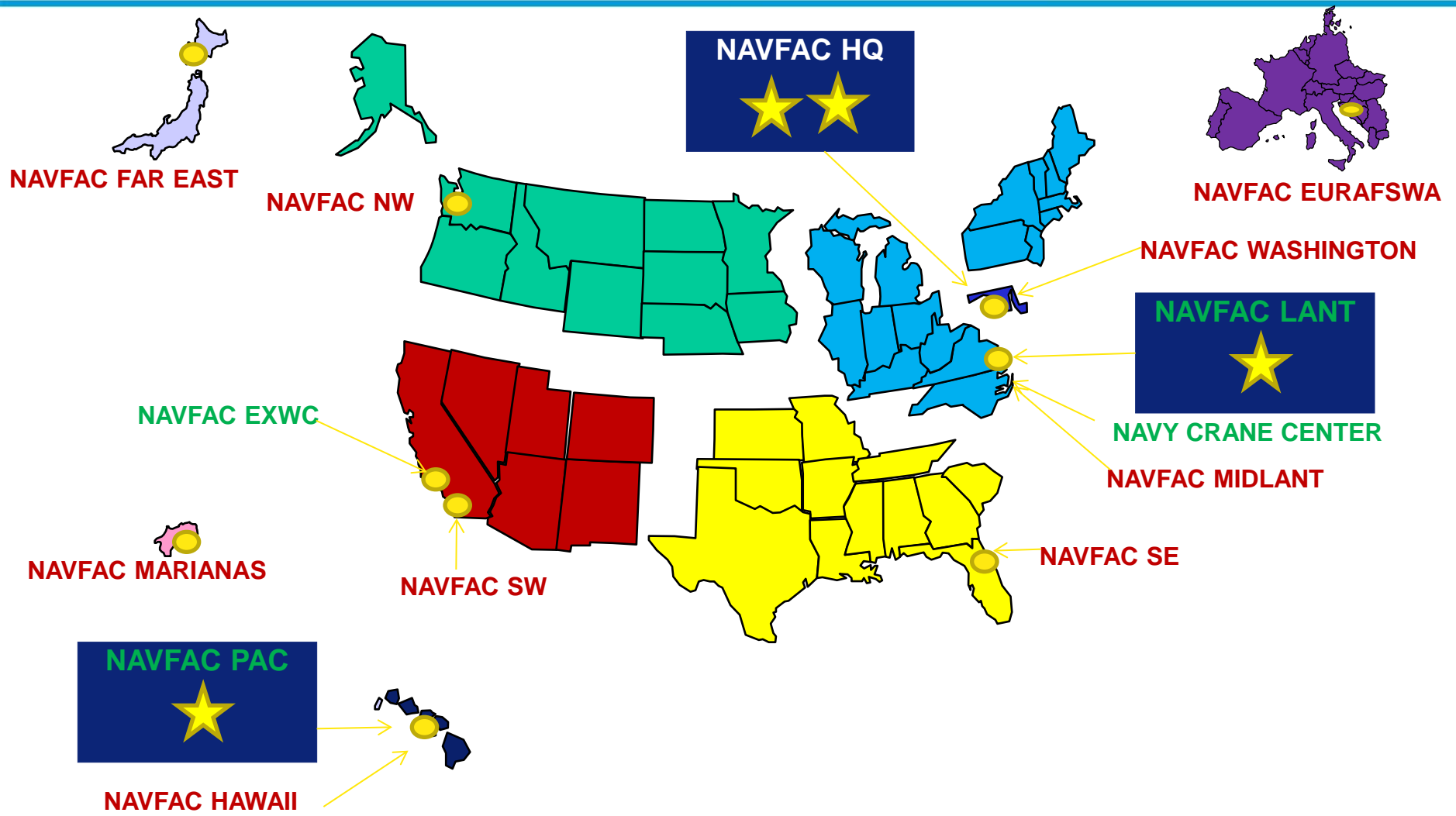
- Public Works
- Asset Management
- Expeditionary
- Contingency Engineering
- Capital Improvements
- Environmental

Support Lines:

- Acquisition
- Financial Management
- Chief Information Officer
- Chief Engineer
- Counsel



Worldwide Facilities Engineering Expertise



Echelon III Commands (4) Echelon IV Commands (9) PWDs (69) FEADs (14) ROICCs (15) Other (3)

Globally Aligned to Support Fleet/Warfighter

FY17 Department of Navy PresBud Submit Shore Budget Highlights



	FY 2016 Enacted (\$M)	PB 2017 (\$M)	Delta (\$M)	Delta (%)
Military Construction, Active + Reserve ¹	1,740	1,126	-614	-35.3%
Family Housing Construction	17	94	77	452.9%
Family Housing Operations	353	301	-52	-14.7%
BRAC ²	170	154	-16	-9.4%
Sustainment Restoration & Modernization (O&M) ¹	3,110	2,356	-754	-24.2%
Base Operating Support ¹	7,624	7,610	-14	-0.2%
Environmental Restoration, Navy	300	282	-18	-6.0%
TOTAL	13,314	11,923	-1,391	-10.4%

1 Includes Overseas Contingency Operations (OCO) & European Reassurance Initiative (ERI)

2 Prior Funds will also support FY2015 BRAC activities

Recent DON MILCON Budget History



BLUF: PB17 funding level is low (similar to FY15)

- **FY15**

- PB15 submit = \$1,070M
- Appropriation = \$1,136M

- **FY16**

- PB16 submit = \$1,705M
- Appropriation = \$1,740M

- **FY17**

- PB17 submit = \$1,126M (35% decrease)
- SRM decreased 24%
 - Provides the minimum level of funding to address potential life, safety, health and highest mission requirements
 - Taking risks on facilities sustainment, deferred sustainment results in faster degradation of facilities

FY17 Department of Navy PresBud Submit MILCON Highlights



- **FY17 DON MILCON Request \$1.126B**
 - 62% Blue Navy, 38% USMC
 - 35% lower than FY16 appropriation (\$1.740B)

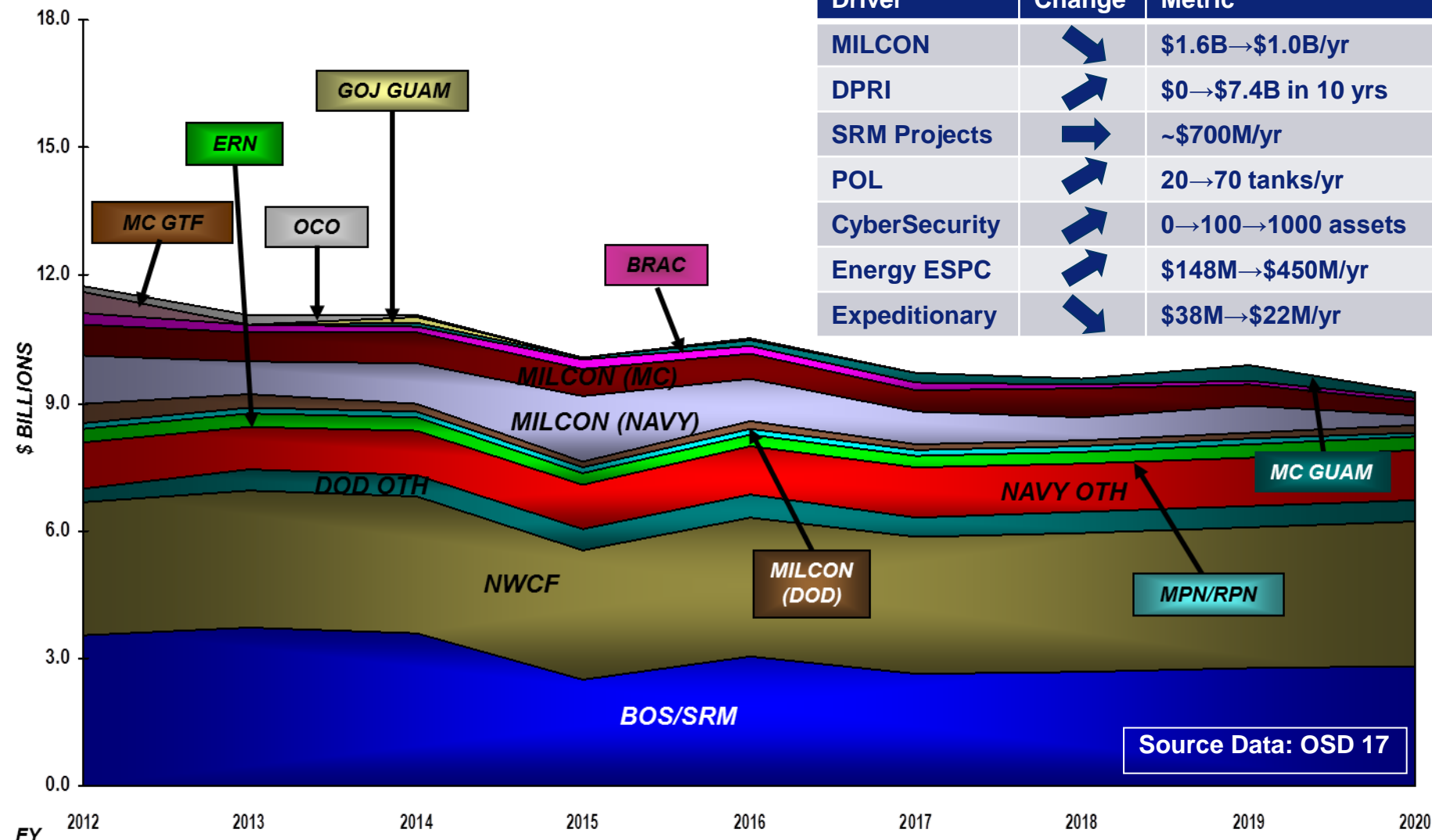
FY17	MCON	MCNR	TOTAL	%
USN	\$ 686M	\$14M	\$ 700M	62%
USMC	\$ 401M	\$25M	\$ 426M	38%
Total	\$1,087M	\$39M	\$1,126M	

- **Program focused on targeting investments to provide maximum readiness in support of current and future mission requirements:**
 - **Combatant Commander support**
 - **New Platforms/Missions**
 - **Support of force relocations/increased force requirements**
 - **Training support**
 - **Recapitalization of shipyards and other critical shore infrastructure**
 - **Utilities infrastructure upgrades**
 - **Improve safety, security & environmental compliance posture**
 - **Qualify of life improvements**
- **FY17 Family Housing Construction \$94M**

Workload Drivers



Driver	Change	Metric
MILCON	↘	\$1.6B → \$1.0B/yr
DPRI	↗	\$0 → \$7.4B in 10 yrs
SRM Projects	↗	~\$700M/yr
POL	↗	20 → 70 tanks/yr
CyberSecurity	↗	0 → 100 → 1000 assets
Energy ESPC	↗	\$148M → \$450M/yr
Expeditionary	↘	\$38M → \$22M/yr



Source Data: OSD 17

New Challenges – New Opportunities

FY 17 MILCON Workload

(MCON, MCNR, Family Housing, Defense)



CATEGORY **% WORKLOAD**

Operational & Training Facilities	40%
Maintenance & Production Facilities	23%
Utilities, Land, & Site Improvements	15%
Housing and Community Facilities	9%
Medical Facilities	8%
Supply Facilities	3%
Research, Development, Test and Evaluation Facilities	2%

COMPONENT **% WORKLOAD**

Southwest	25%
Marianas	17%
Mid-Atlantic	16%
Hawaii	11%
Washington	10%
Northwest	7%
Far East	5%
Southeast	5%
Europe / SW Asia	4%

Acquisition



- **Change in Acquisition Strategy**
 - **60% DBB (Project type)**
 - **40% DB**
- **Multiple Award Construction Contracts (MACCs) are still a viable tool**
- **Cost Estimating**
 - **AEs Track Record**
 - **Need Your Help**

NAVFAC Small Business Achievements



US Prime Awards	FY14			FY15*			YTD FY16*		
	Eligible =		\$ 7.11B	Eligible =		\$ 6.36B	Eligible =		\$ 1.67B
	Target	Dollars	Actual	Target	Dollars	Actual	Target	Dollars	Current
Small Business (SB)	46%	\$ 3.60B	50.60%	46%	\$ 3.20B	50.32%	46%	\$ 715M	43%
HUBZone	9%	\$ 752.1M	10.57%	9%	\$ 576.1M	9.06%	8%	\$ 103.6M	6.23%
Service-Disabled Veteran-Owned (SDVOSB)	4%	\$527.6M	7.41%	4%	\$397.4M	6.24%	4.5%	\$ 86.3M	5.19%
Small Disadvantaged Business (SDB)	24%	\$2.42B	34.06%	24%	\$2.06B	32.49%	23%	\$ 495.3M	29.78%
Woman-Owned (WOSB)	7%	\$688.8M	9.68%	7%	\$612M	9.62%	6.25%	\$ 159.8M	9.61%

Data from FPDS-NG 02/10/2016. * FPDS-NG Data Incomplete. Includes overseas as reported by Navy OSBP.

Contract Listings and Acquisition Forecasts

http://www.navfac.navy.mil/products_and_services/sb/opportunities.html



NAVFAC Current Long Range
IDIQ Projects

NAVFAC & Navy Long Range
Acquisition Forecast (LRAF)

NAVFAC Military Construction
(MILCON) Forecast

NAVFAC Environmental
Projects and Planning

Current contract listings and acquisition forecasts

POC information for both government and industry

Regional Opportunities – Command specific lists

Subcontracting Opportunities – Potential leads through various lists

For preliminary planning purposes only – see www.fbo.gov for solicitation announcements



Department of the Navy O&M SRM

- **Provides sustainment, restoration, and modernization of facilities**
 - “Special Projects” are larger, centrally managed efforts that will be contracted
 - May be design-build or design-bid-build
 - Many more maintenance and minor projects also occurring locally
- **Operations & Maintenance (O&M) projects are more fluid than the MILCON program**
 - Individual projects and the program amount will adjust
 - Facilities can serve as a bill payer or year-end opportunity
- **Navy is focusing effort on operational facilities**
 - Energy remains a priority
 - Quality of life projects also common
- **Financed energy work (ESPC & UESC) also represent construction opportunities**
 - \$480M anticipated awards in FY16
 - Acquired via DoE vehicle with NAVFAC performing contracting

Special Projects	FY14	FY15	FY16	FY17
USN	\$669M	\$439M	\$772M	\$479M
USMC	\$380M	\$230M	\$343M	\$226M



No. of CNIC SRM Projects

	\$0-\$5M		\$5M-\$10M		\$10M-\$20M		\$20M-\$50M	
	FY16	FY17	FY16	FY17	FY16	FY17	FY16	FY17
NAVFAC Far East	6		2	1	1			
NAVFAC Marianas	16	15	6	3				1
NAVFAC Hawaii	10	9	2	1	1	3		
NAVFAC EURAFSWA	11	7	3		2	1		
NAVFAC Mid-Atlantic	34	19	4	5	6	1	3	4
NAVFAC Northwest	9	10	1	3	1	1		
NAVFAC Southeast	15	6	3		4		4	2
NAVFAC Southwest	22	9	4	3	6	2		
NAVFAC Washington	10	2	1			1	1	

Note: Projects depicted on this table are typically >\$500,000. Smaller projects are also awarded.

Disclaimer: Operations & Maintenance (O&M) projects are more fluid than the MILCON program. Individual projects and the program amount will adjust.

No. of USMC SRM Projects



	\$0-\$5M		\$5M-\$10M		\$10M-\$20M		\$20M-\$50M	
	FY16	FY17	FY16	FY17	FY16	FY17	FY16	FY17
NAVFAC Far East	21	23	5	4	2		1	
NAVFAC Hawaii	16	31	4	3	1			
NAVFAC Mid-Atlantic	134	128	5	3				
NAVFAC Southeast	4	1		1				
NAVFAC Southwest	164	127	5	7	1	1		
NAVFAC Washington	41	15	2	2		1		

Note: USMC projects in the NAVFAC Southeast area of responsibility are now managed by NAVFAC Mid-Atlantic, with the exception of projects at MCSF Blount Island. Additional, smaller projects are planned and executed locally.

Disclaimer: Operations & Maintenance (O&M) projects are more fluid than the MILCON program. Individual projects and the program amount will adjust.

FY16/17 MILCON Projects

FY 16 MCON, MCNR, Family Housing, Defense Projects



<u>Location/Installation</u>	<u>Description</u>	<u>Cost</u>	<u>Design Level</u>
JB ANDREWS, MD	VEHICLE OPERATIONS ADDITION	1,658,000	DB
CAMP LEJEUNE, NC	SOF MARINE BATTALION COMPANY/FEAM FACILITIES	54,970,000	DBB
CAMP LEJEUNE, NC	SOF COMBAT SERVICE SUPPORT FACILITY	14,036,000	DBB
CAMP LEMONNIER, DJIBOUTI	CONSTRUCT FUEL STORAGE FACILITIES	43,700,000	DBB
CAMP PENDLETON, CA	SOF COMBAT SERVICE SUPPORT FACILITY	10,181,000	DBB
INDIAN ISLAND, WA	SHORE POWER TO AMMUNITION PIER	4,472,000	DBB
BARKING SANDS, HI	PMRF POWER GRID CONSOLIDATION	30,623,000	DB
OKINAWA, JAPAN	UPGRADE MOORING BOLLARDS AT TENGAN PIER	2,570,000	DB
YOKOSUKA, JAPAN	CYBER MISSION FORCE SCIF CONSTRUCTION	1,920,000	DBB
YOKOSUKA, JAPAN	CHILD DEVELOPMENT CENTER	13,846,000	DB
CORONADO, CA	SOF LOGISTICS SUPPORT UNIT ONE OPS FACILITY #2	47,218,000	DB
QUANTICO, VA	EMBASSY SECURITY GUARD BEQ & OPS FACILITY	43,941,000	DB
QUANTICO, VA	ELECTRICAL DISTRIBUTION UPGRADE	8,418,000	DBB
BROOKLYN, NY	RESERVE CENTER STORAGE FACILITY	2,479,000	DBB
DAM NECK, VA	RESERVE TRAINING CENTER COMPLEX	18,443,000	DB
JEB LITTLE CREEK-STORY, VA	SKEETER LANE RENOVATION & CONVERSION	3,658,000	DBB
JEB LITTLE CREEK-STORY, VA	EXMCM UUV OPERATIONS AND MAINTENANCE FACILITY	2,900,000	DB
JEB LITTLE CREEK-STORY, VA	CONSTRUCT HOUSING WELCOME CENTER	438,000	DBB
KANEOHE BAY, HI	P-8A DETACHMENT SUPPORT FACILITIES	12,429,000	DB
JB PEARL HARBOR-HICKAM, HI	UEM INTERCONNECT STA C TO HICKAM	6,335,000	DB
JB PEARL HARBOR-HICKAM, HI	WELDING SCHOOL SHOP CONSOLIDATION	8,546,000	DB
JB PEARL HARBOR-HICKAM, HI	F-22 FIGHTER ALERT FACILITY	46,000,000	
JEB LITTLE CREEK-STORY, VA	SOF APPLIED INSTRUCTION FACILITY	23,916,000	DB
JOINT REGION MARIANAS, GUAM	PAR - LO/CORROSION CNTRL/COMPOSITE REPAIR	34,400,000	DBB
MARBKS WASHINGTON DC	COMMUNICATIONS CENTER FOR MBW	2,640,000	DBB

FY 16 MCON, MCNR, Family Housing, Defense Projects



<u>Location/Installation</u>	<u>Description</u>	<u>Cost</u>	<u>Design Level</u>
QUANTICO, VA	ATFP GATE	5,840,000	DBB
TWENTYNINE PALMS, CA	MICROGRID EXPANSION	9,160,000	DBB
TOWNSEND, GA	TOWNSEND BOMBING RANGE EXPANSION PHASE 2	48,279,000	LAND
CHERRY POINT MCAS, NC	UNMANNED AIRCRAFT SYSTEM FACILITIES	29,657,000	DB
CHERRY POINT MCAS, NC	KC130J ENLSITED AIR CREW TRAINER FACILITY	4,769,000	DBB
CHERRY POINT MCAS, NC	AIRFIELD SECURITY IMPROVEMENTS	23,300,000	DBB
IWAKUNI, JAPAN	WHOLEHOUSE REVITALIZATION MONZEN TOWNHOUSES PHASE 3	7,857,000	DB
IWAKUNI, JAPAN	E-2D OPERATIONAL TRAINER COMPLEX	8,716,000	DBB
IWAKUNI, JAPAN	SECURITY MODIFICATIONS - CVW5/MAG12 HQ	9,207,000	DBB
MIRAMAR, CA	KC-130J ENLISTED AIR CREW TRAINER	11,200,000	DB
NEW RIVER, NC	RADAR AIR TRAFFIC CONTROL FACILITY ADDITION	4,918,000	DBB
NEW RIVER, NC	OPERATIONAL TRAINER FACILITY	3,312,000	DBB
YUMA, AZ	AIRCRAFT MAINT. FACILITIES & APRON (SO. CALA)	50,635,000	DBB
CAMP PENDLETON, CA	NICOE SATELLITE INFRASTRUCTURE SUPPORT	2,050,000	DB
CAMP PENDLETON, CA	RAW WATER PIPELINE PENDLETON TO FALLBROOK	44,540,000	DBB
KANEOHE BAY, HI	MEDICAL/DENTAL CLINIC REPLACEMENT	122,071,000	DBB
KANEOHE BAY, HI	AIRFIELD LIGHTING MODERNIZATION	26,097,000	DBB
KANEOHE BAY, HI	BACHELOR ENLISTED QUARTERS	68,092,000	DB
CAMP LEJEUNE, NC	2ND RADIO BN COMPLEX PHASE 1	50,557,000	DBB
CAMP LEJEUNE, NC	SIMULATOR INTEGRATION/RANGE CONTROL FACILITY	54,849,000	DB
CAMP BUTLER, JAPAN	MILITARY WORKING DOG FACILITIES (CAMP HANSEN)	11,697,000	DBB
KADENA AB, JAPAN	AIRCRAFT MAINT. SHELTERS & APRON	23,310,000	DBB
ALBANY, GA	GROUND SOURCE HEAT PUMPS	7,851,000	DBB
PARRIS ISLAND, SC	RANGE SAFETY IMPROVEMENTS & MODERNIZATION	27,075,000	DBB
NAS CORPUS CHRISTI, TX	POWERTRAIN - TRANSMISSIONS SUBASSEMBLY	82,000,000	DBB

FY 16 MCON, MCNR, Family Housing, Defense Projects



<u>Location/Installation</u>	<u>Description</u>	<u>Cost</u>	<u>Design Level</u>
FALLON, NV	NAVOPSPTCEN FALLON	11,480,000	DB
JACKSONVILLE, FL	FLEET SUPPORT FACILITY ADDITION	8,455,000	DBB
JACKSONVILLE, FL	TRITON MISSION CONTROL FACILITY	8,296,000	DBB
NEW ORLEANS, LA	POLICE STATION ADDITION	1,230,000	DBB
LEMOORE, CA	RTO AND MISSION DEBRIEF FACILITY	7,146,000	DB
LEMOORE, CA	F-35C HANGAR MODIFICATION AND ADDITION	56,497,000	DBB
LEMOORE, CA	F-35C TRAINING FACILITIES	8,187,000	DBB
DAM NECK, VA	MARITIME SURVEILLANCE SYSTEM FACILITY	23,066,000	DBB
PENSACOLA, FL	A-SCHOOL UNACCOMPANIED HOUSING (CORRY STATION)	18,347,000	DB
SIGONELLA, ITALY	TRITON HANGAR AND OPERATION FACILITY	40,641,000	DB
SIGONELLA, ITALY	P-8A HANGAR WITH FLEET SUPPORT FACILITY	62,302,000	DB
WHITING FIELD, FL	T-6B JPATS TRAINING OPERATIONS FACILITY	10,421,000	DBB
PATUXENT RIVER, MD	UNACCOMPANIED HOUSING	40,935,000	DB
CORONADO, CA	COASTAL CAMPUS UTILITIES	4,856,000	DB
JOINT REGION MARIANAS, GUAM	SANITARY SEWER SYSTEM RECAPITALIZATION	45,314,000	DB
JOINT REGION MARIANAS, GUAM	LIVE-FIRE TRAINING RANGE COMPLEX (NW FIELD)	125,677,000	DB
BANGOR, WA	REGIONAL SHIP MAINTENANCE SUPPORT FACILITY	12,753,000	DBB
BREMERTON, WA	DRY DOCK 6 MODERNIZATION & UTILITY IMPROVEMENTS	22,680,000	DBB
BANGOR, WA	WRA LAND/WATER INTERFACE	34,177,000	DBB
SAN DIEGO, CA	LCS SUPPORT FACILITY	37,366,000	DB
SW ASIA, BAHRAIN ISLAND	SHIP MAINTENANCE SUPPORT FACILITY	52,091,000	DB
SW ASIA, BAHRAIN ISLAND	MINA SALMAN PIER REPLACEMENT	37,700,000	DB
PORTSMOUTH, VA	WATERFRONT UTILITIES	45,513,000	DBB
JOINT REGION MARIANAS, GUAM	HEAVY WEATHER MOORING SIERRA WHARF, GUAM	1,610,000	DBB
POINT MUGU, CA	E-2C/D HANGAR ADDITIONS AND RENOVATIONS	19,453,000	DBB

FY 16 MCON, MCNR, Family Housing, Defense Projects



<u>Location/Installation</u>	<u>Description</u>	<u>Cost</u>	<u>Design Level</u>
POINT MUGU, CA	TRITON AVIONICS AND FUEL SYSTEMS TRAINER	2,974,000	DB
JOINT REGION MARIANAS, GUAM	APR INSTALLATION CONTROL CENTER	22,200,000	DB
MAYPORT, FL	LCS MISSION MODULE READINESS CENTER	16,159,000	DBB
NORFOLK, VA	MH60 HELICOPTER TRAINING FACILITY	7,134,000	DBB
NORFOLK, VA	ELECTRICAL REPAIRS TO PIERS 2,6,7, AND 11	44,254,000	DB
NORFOLK, VA	COMMUNICATIONS CENTER	75,289,000	DBB
NORFOLK, VA	COMMERCIAL VEHICLE INSPECTION STATION	2,800,000	DBB
ROTA, SPAIN	ROTA ELEMENTARY AND HIGH SCHOOL ADDITIONS	13,737,000	DBB
NEW ORLEANS, LA	REPLACE SQUADRON OPERATIONS FACILITY	10,000,000	
KINGS BAY, GA	INDUSTRIAL CONTROL SYSTEM INFRASTRUCTURE	8,099,000	DBB
JOINT REGION MARIANAS, GUAM	MUNICIPAL SOLID WASTE LANDFILL CLOSURE	10,777,000	DBB
JOINT REGION MARIANAS, GUAM	APR - DISPERSED MAINTENANCE SPARES AND SE STORAGE FACILITY	19,000,000	DB
JOINT REGION MARIANAS, GUAM	PRTC ROADS	2,500,000	DB
JOINT REGION MARIANAS, GUAM	PAR SOUTH RAMP UTILITIES PHASE 2	7,100,000	DBB
REDZIKOWO BASE, POLAND	AEGIS ASHORE MISSILE DEFENSE COMPLEX	51,270,000	DBB

FY 17 MCON, MCNR, Family Housing, Defense Projects



<u>Location/Installation</u>	<u>Description</u>	<u>Cost</u>	<u>Design Level</u>
JB ANDREWS, MD	PAR (4) RELOCATE JOINT AIR DEFENSE OPERATIONS CENTER (JADOC)	3,500,000	DBB
JB ANDREWS, MD	21 POINT ENCLOSED FIRING RANGE	13,000,000	DB
BARKSDALE AFB, LA	CONSOLIDATED COMMUNICATION FACILITY	21,000,000	DB
BETHESDA NSA	MEDICAL FACILITY ADD/ALT (AUTH 510,000K)	50,000,000	DBB
CAMP LEJEUNE, NC	DENTAL CLINIC REPLACEMENT	31,000,000	DBB
CAMP LEMONNIER, DJIBOUTI	OCO: MEDICAL/DENTAL FACILITY	37,409,000	DBB
CHARLESTON AFB, SC	CONSTRUCT HYDRANT FUEL SYSTEM	17,000,000	DBB
BARKING SANDS, HI	UPGRADE POWER PLANT & ELECTRICAL DISTRIB SYS	43,384,000	DBB
SEAL BEACH, CA	MISSILE MAGAZINES	21,007,000	DBB
SASEBO, JAPAN	SHORE POWER (JULIET PIER)	16,420,000	DBB
CORONADO, CA	SOF BASIC TRAINING COMMAND	96,077,000	
CORONADO, CA	SOF SEAL TEAM OPS FACILITY	55,686,000	
CORONADO, CA	SOF SEAL TEAM OPS FACILITY	41,457,000	
CORONADO, CA	SOF HUMAN PERFORMANCE TRAINING CENTER	16,000,000	
BROOKLYN, NY	ELECTRIC FEEDER DUCTBANK	1,964,000	DB
SYRACUSE, NY	MARINE CORPS RESERVE CENTER	13,229,000	DB
GALVESTON, TX	RESERVE CENTER ANNEX	8,414,000	DB
JB ANDREWS, MD	RELOCATE HAZARDOUS CARGO PAD & EOD PROFICIENCY RANGE	31,000,000	
JB ANDREWS, MD	PAR RELOCATE K9 KENNEL	5,400,000	
JB ANDREWS, MD	PAR (4) TAXIWAY REQUIREMENTS	44,000,000	
JB PEARL HARBOR-HICKAM, HI	APR AIRCRAFT MAINTENANCE SUPPORT FACILITY	1,800,000	
JB PEARL HARBOR-HICKAM, HI	APR EXPAND AIRCRAFT PARKING APRON	28,600,000	
JB PEARL HARBOR-HICKAM, HI	APR AIRCRAFT MAINTENANCE SUPPORT FACILITY	1,800,000	
BEAUFORT, SC	AIRCRAFT MAINTENANCE HANGAR	83,490,000	DB
CHERRY POINT MCAS, NC	CENTRAL HEATING PLANT CONVERSION	12,515,000	DBB

FY 17 MCON, MCNR, Family Housing, Defense Projects



<u>Location/Installation</u>	<u>Description</u>	<u>Cost</u>	<u>Design Level</u>
MCAS IWAKUNI, JAPAN	WHR NORTH SIDE TOWNHOUSES PH 2; 36 UNITS;	11,047,000	DB
YUMA, AZ	VMX-22 MAINTENANCE HANGAR	48,355,000	DBB
KANEOHE BAY, HI	REGIMENTAL CONSOLIDATED COMM/ELEC FACILITY	72,565,000	DBB
CAMP LEJEUNE, NC	RANGE FACILITIES SAFETY IMPROVEMENTS	18,482,000	DBB
KADENA AB, JAPAN	AIRCRAFT MAINTENANCE COMPLEX	26,489,000	DBB
PARRIS ISLAND, SC	RECRUIT RECONDITIONING CENTER & BARRACKS	29,882,000	DB
FALLON, NV	AIR WING SIMULATOR FACILITY	13,523,000	DBB
NEW ORLEANS, LA	JOINT RESERVE INTELLIGENCE CENTER	11,207,000	DBB
LEMOORE, CA	F-35C ENGINE REPAIR FACILITY	26,723,000	DBB
WHIDBEY ISLAND, WA	TRITON MISSION CONTROL FACILITY	30,475,000	DB
WHIDBEY ISLAND, WA	EA-18G MAINTENANCE HANGAR	45,501,000	DB
EGLIN AFB, FL	WMD FIELD TRAINING FACILITIES	20,489,000	DB
PATUXENT RIVER, MD	UCLASS RDT&E HANGAR	40,576,000	DBB
CORONADO, CA	COASTAL CAMPUS ENTRY CONTROL POINT	13,044,000	DBB
CORONADO, CA	GRACE HOPPER DATA CENTER POWER UPGRADES	10,353,000	DBB
CORONADO, CA	COASTAL CAMPUS UTILITIES INFRASTRUCTURE	81,104,000	DBB
JOINT REGION MARIANAS, GUAM	POWER UPGRADE - HARMON	62,210,000	DBB
JOINT REGION MARIANAS, GUAM	HARDENING OF GUAM POL INFRASTRUCTURE	26,975,000	DBB
BANGOR, WA	SUBMARINE REFIT MAINT SUPPORT FACILITY	21,476,000	DBB
BREMERTON, WA	NUCLEAR REPAIR FACILITY	6,704,000	DB
BANGOR, WA	SERVICE PIER ELECTRICAL UPGRADES	18,939,000	DBB
SAN DIEGO, CA	ENERGY SECURITY HOSPITAL MICROGRID	6,183,000	DB
ROTA, SPAIN	COMMUNICATION STATION	23,607,000	DBB
KEFLAVIK, ICELAND	ERI: P-8A HANGAR UPGRADE	14,600,000	
KEFLAVIK, ICELAND	ERI: P-8A AIRCRAFT RINSE RACK	5,000,000	

FY 17 MCON, MCNR, Family Housing, Defense Projects



<u>Location/Installation</u>	<u>Description</u>	<u>Cost</u>	<u>Design Level</u>
DIEGO GARCIA	IMPROVE WHARF REFUELING CAPABILITY	30,000,000	DB
JOINT REGION MARIANAS, GUAM	CONSTRUCT/REPLACE BASE HOUSING PH I	79,371,000	DBB
PEARL CITY, HI	SOF UNDERSEA OPERATIONAL TRAINING FACILITY	47,533,000	
KITTERY, ME	UNACCOMPANIED HOUSING	17,773,000	DB
KITTERY, ME	UTILITY IMPROVEMENTS FOR NUCLEAR PLATFORMS	30,119,000	DBB
KITTERY, ME	MEDICAL/DENTAL CLINIC REPLACEMENT	27,000,000	DBB
SAIPAN	APR APRON EXPANSION WITH TYPE III HYDRANTS	50,000,000	
SAIPAN	PORT POL SYSTEM (500K BBL ASTS) PHASE I	18,500,000	
TRAVIS AFB, CA	REPLACE HYDRANT FUEL SYSTEM	26,500,000	DBB
JOINT REGION MARIANAS, GUAM	MUNITIONS STORAGE IGLOOS, PHASE 2	35,300,000	DB
JOINT REGION MARIANAS, GUAM	BLOCK 40 MAINTENANCE REPAIR	30,500,000	DBB
JOINT REGION MARIANAS, GUAM	APR - SATCOM C4I FACILITY	14,200,000	DB
WORLDWIDE UNSPECIFIED	TRITON FORWARD OPERATING BASE HANGAR	41,380,000	DB

Questions?

